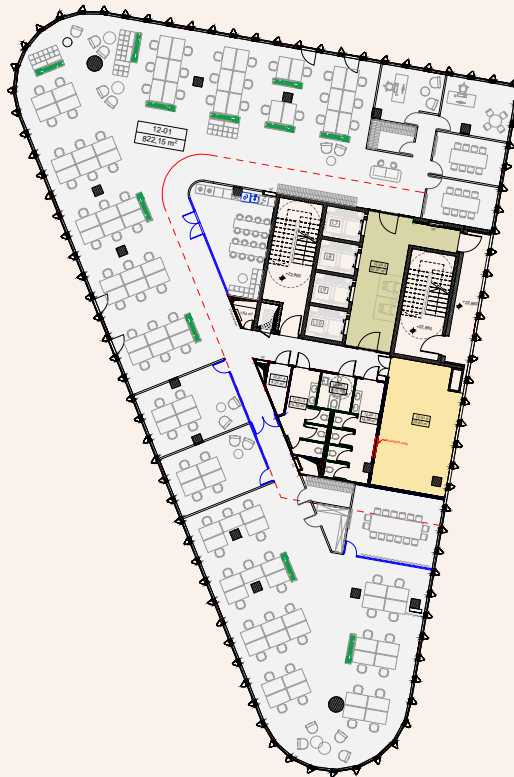
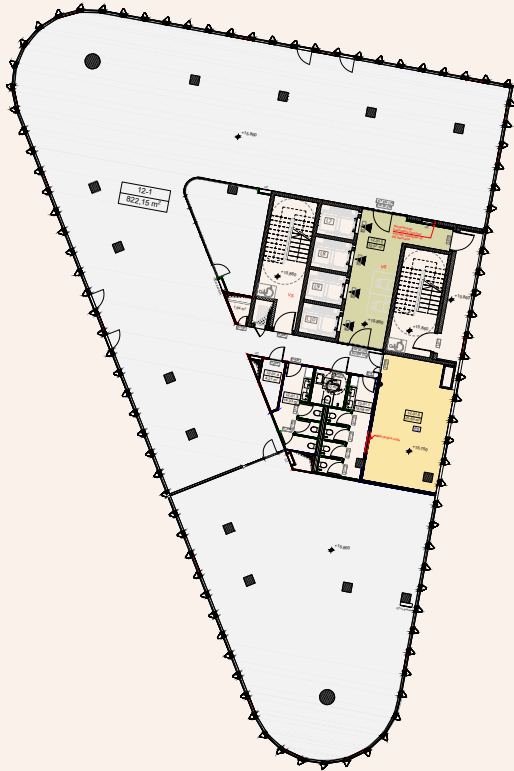


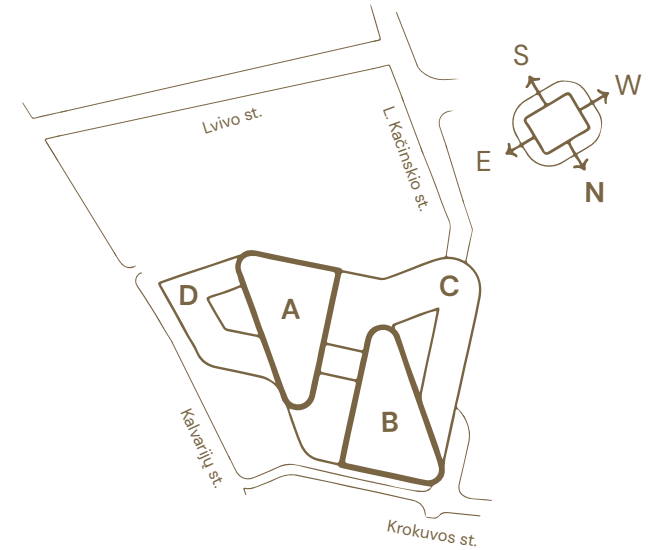
12th Floor area

Tower: A



Typical planning
Workplaces: 92

Location



Explanation of floor areas

Tower / Room No.	Room Name	Area, m ²	
A	12-1	Office work zone	822,15
	12-1.1	Elevator lobbies	32,07
	12-1.2	Technical rooms	25,63
	Total floor area		879,85