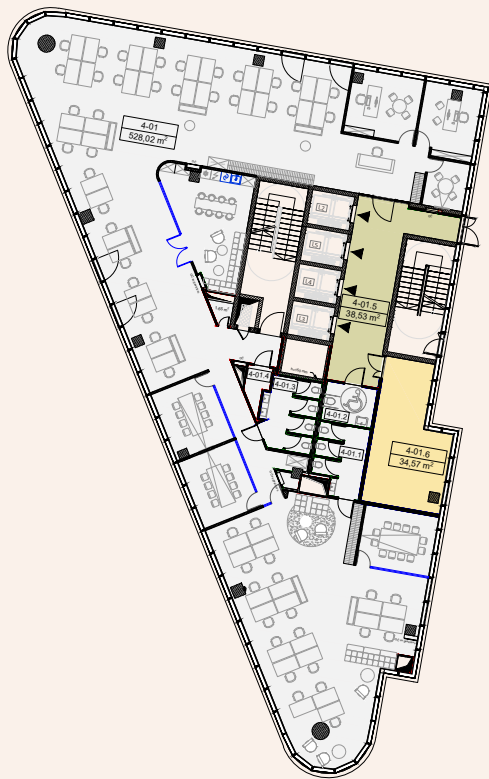


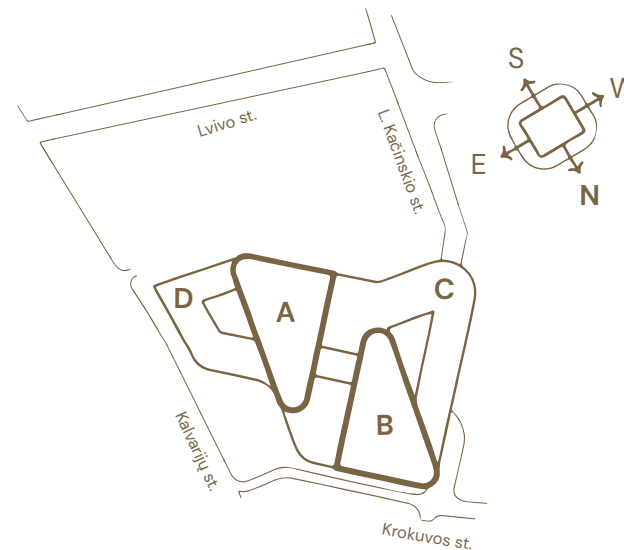
4th Floor area

Tower: A



Typical planning
Workplaces: 53

Location



Explanation of floor areas

Tower / Room No.	Room Name	Area, m ²	
A	4-1	Office work zone	528,02
	4-1.1	Elevator lobbies	38,53
	4-1.2	Technical rooms	34,57
	Total floor area		601,12